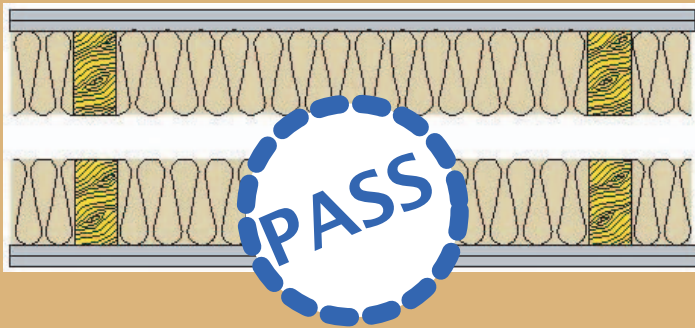


# Insulate naturally! with Isonat<sup>®</sup>

Natural Fibre Insulation

## Isonat<sup>®</sup> Soundproofing Solutions to meet Part E of the Building Regulations

### Separating Wall / Timber Stud



#### Description:

2 x 12.5mm plasterboard each side  
100mm x 50mm timber stud work at 600mm  
centres with 50mm gap between each wall

**100mm ISONAT insulation in each wall**

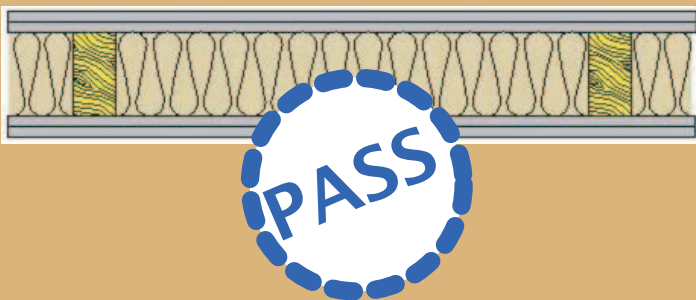
**Sound Reduction  
Performance**

**59 RwdB  
(53 RwdB + Ctr)**

**Part E Requirement:**

**45 DnTw + CtrdB for New Build  
43 DnTw + CtrdB for Renovation**

### Internal Wall / Timber Stud



#### Description:

2 x 12.5mm plasterboard each side  
100mm x 50mm timber stud work at 600mm  
centres

**100mm ISONAT insulation**

**Sound Reduction  
Performance**

**48 RwdB**

**Part E Requirement:**

**40 RwdB**

### Internal Wall / Timber Stud



#### Description:

1 x 12.5mm plasterboard each side  
100mm x 50mm timber stud work at 600mm  
centres

**100mm ISONAT insulation**

**Sound Reduction  
Performance**

**45 RwdB**

**Part E Requirement:**

**40 RwdB**