

Lindab Colour Chart  
For every colour under the rainbow



## Assortment chart - rainline/seamline/topline

Number	Name	Nearest NCS	Nearest RAL	Rainline	Seamline		Topline		
					Steel	Aluminium	PE	HBP	MPE
001	Antique white	S 1002-G50Y	9002	●	HBP				
010	Chalk white	S 0502-G	9010		P				
015	Black	S 9000-N	9005	●	HBP, HBPM, P	PVDF	0,5	0,5	0,5
022	Light grey	S 2005-G60Y	7044		HBP, P		0,5		
036	Led grey	S 7502-B	7024		HBP				
044	Anthracite metallic	S 6000-N	9007	●	HBP, HBPM				
045	Silver metallic	S 2002-B	9006	●	HBP	PVDF			
087	Slate grey	S 7005-B20G	7011	●	HBP, HBPM	PVDF	0,5	0,5	0,5
244	Zinc grey	S 3502-B	7040		HBP				
272	Ochre	S 4050-Y50R	8023					0,5	
387	Coffee brown	S 8502-Y	6022	●	HBP			0,5	
412	Fire red	S 2070-Y90R	3000				0,5		
434	Brown	S 8005-Y80R	8017	●	HBP		0,5	0,5	0,5
461	Goosewing grey	S 3502-Y	7038		HBP				
502	Light blue	S 4030-B10G	5024		HBP		0,5		
742	Tile red	S 4040-Y80R	8004	●	HBP, HBPM		0,5	0,5	0,5
747	Wine red	S 5040-Y90R	3004				0,5		0,5
754	Red	S 4050-Y90R	3011				0,5		
758	Dark red	S 5040-Y80R	3009	●	HBP	PVDF	0,5	0,5	
762	Tile brown	S 5040-Y60R	8004						0,5
778	Copper metallic	S 4030-Y60R	8003	●	HBP			0,5	
830	Pine green	S 7010-G30Y	6020	●	HBP		0,5	0,5	0,5
874	Forest green	S 6020-G30Y	6003		HBP		0,5		
975	Copper green	S 3020-G10Y	6021		HBP				

## Assortment chart - comfort

Number	Name	Nearest NCS	Nearest RAL	Comfort
204	Comfort white	S 0603-G80Y	9010	0,6/0,7/1,0

P = Plastisol; leather embossed P200

PE = Polyester, Gloss: 30 ±5

HBP = High Build Polyester, Gloss: 40 ±5

HBPM = Matt High Build Polyester, Gloss: 7 ±3

MPE = Matt Polyester, Gloss: 5 ±3

For Topline and Coverline, the thickness of the steel is specified in mm.

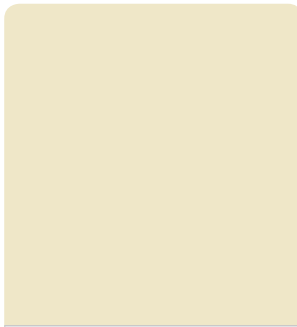
This colourchart is general with variations on markets and it can be subject for changes.  
For Coverline/Topline: All of the thicknesses and colours are not available in all profiles.

## Assortment chart - coverline/building system/doorline

Number	Name	Nearest NCS	Nearest RAL	Coverline				Building System	Doorline
				PE	HBP	MPE	PVDF	Corresp. no	PE
001	Antique white	S 1002-G50Y	9002		0,5/0,6				
010	Chalk white	S 0502-G	9010	0,4/0,5/0,6			●		0,4
015	Black	S 9000-N	9005	0,4/0,5/0,6 0,7/0,8/1,0	0,5/0,6	0,5	●		0,4
022	Light grey	S 2005-G60Y	7044	0,5	0,6			01	0,4
036	Led grey	S 7502-B	7024		0,5/0,6				0,4
044	Anthracite metallic	S 6000-N	9007				●	44	0,4
045	Silver metallic	S 2002-B	9006	0,5/0,6	0,6		●	45	0,4
078	Interior white	S 1502-Y	9002	0,5/0,7/0,8 1,0/1,2				39	
087	Slate grey	S 7005-B20G	7011	0,5/0,6	0,5/0,6	0,5		35	0,4
113	Beige	S 1010-Y30R	1015	0,5					
116	Yellow	3030-Y20R	1011		0,5				0,4
152	Mustard yellow	S 2040-Y10R	1002	0,5					
244	Zinc grey	S 3502-B	7040		0,6				
272	Ochre	S 4050-Y50R	8023		0,5				
387	Coffee brown	S 8502-Y	6022		0,6				
412	Fire red	S 2070-Y90R	3000	0,5				37	0,4
434	Brown	S 8005-Y80R	8017	0,5	0,5/0,6	0,5			0,4
461	Goosewing grey	S 3502-Y	7038		0,6				0,4
502	Light blue	S 4030-B10G	5024	0,5	0,6				
524	Dark blue	S 6020-B	5001	0,5				36	
542	Signal blue	S 4550-R90B	5010	0,5				32	
742	Tile red	S 4040-Y80R	8004	0,5	0,5/0,6	0,5			0,4
747	Wine red	S 5040-Y90R	3004	0,5		0,5			
754	Red	S 4050-Y90R	3011	0,5					
758	Dark red	S 5040-Y80R	3009	0,4/0,5/0,6	0,5/0,6			38	
762	Tile brown	S 5040-Y60R	8004			0,5			
778	Copper metallic	S 4030-Y60R	8003		0,5				
830	Pine green	S 7010-G30Y	6020	0,5	0,5/0,6	0,5		33	
874	Forest green	S 6020-G30Y	6003	0,5	0,6			34	0,4
975	Copper green	S 3020-G10Y	6021		0,6				
980	Sun yellow	S 1070-Y	1021		0,5				0,4
04	See sand	S 2010-Y20R	7032					04	
15	Squirrel grey	S 4010-R90B	7000					15	
16	Grey blue	S 7010-R90B	7024					16	
19	Rape yellow	S 1080-Y	1021					19	
28	Moss green	S 7020-B90G	6005					28	
50	Snow white	S 0502-G	9003					50	

			
<b>010 Chalk white</b> Nearest NCS S 0502-G Nearest RAL 9010	<b>001 Antique white</b> Nearest NCS S 1002-G50Y Nearest RAL 9002	<b>50 Snow white</b> Nearest NCS S 0502-G Nearest RAL 9003	<b>204 Interior white</b> Nearest NCS S 0603-G80Y Nearest RAL 9010
			
<b>078 Interior white</b> Nearest NCS S 1502-Y Nearest RAL 9002	<b>022 Light grey</b> Nearest NCS S 2005-G60Y Nearest RAL 7044	<b>461 Goosewing grey</b> Nearest NCS S 3502-Y Nearest RAL 7038	<b>244 Zink grey</b> Nearest NCS S 3502-B Nearest RAL 7040
			
<b>15 Squirrel grey</b> Nearest NCS S 4010-R90B Nearest RAL 7000	<b>087 Slate grey</b> Nearest NCS S 7005-B20G Nearest RAL 7011	<b>036 Led grey</b> Nearest NCS S 7502-B Nearest RAL 7024	<b>015 Black</b> Nearest NCS S 9000-N Nearest RAL 9005
			
<b>16 Grey blue</b> Nearest NCS S 7010-R90B Nearest RAL 7024	<b>502 Light blue</b> Nearest NCS S 4030-B10G Nearest RAL 5024	<b>542 Signal blue</b> Nearest NCS S 4550-R90B Nearest RAL 5010	<b>524 Dark blue</b> Nearest NCS S 6020-B Nearest RAL 5001


Due to printing limitations is the colours shown in this brochure not exact. Please ask for steel sheet samples for correct colours.



**113 Beige**  
 Nearest NCS S 1010-Y30R  
 Nearest RAL 1015



**04 Sea sand**  
 Nearest NCS S 2010-Y20R  
 Nearest RAL 7032



**980 Sun yellow**  
 Nearest NCS S 1070-Y  
 Nearest RAL 1021



**19 Rape yellow**  
 Nearest NCS S 1080-Y  
 Nearest RAL 1021



**152 Mustard yellow**  
 Nearest NCS S 2040-Y10R  
 Nearest RAL 1002




**116 Yellow**  
 Nearest NCS S 3030-Y20R  
 Nearest RAL 1011




**412 Fire red**  
 Nearest NCS S 2070-Y90R  
 Nearest RAL 3000



**747 Wine red**  
 Nearest NCS S 5040-Y90R  
 Nearest RAL 3004



**754 Red**  
 Nearest NCS S 4050-Y90R  
 Nearest RAL 3011



**758 Dark red**  
 Nearest NCS S 5040-Y80R  
 Nearest RAL 3009




**742 Tile red**  
 Nearest NCS S 4040-Y80R  
 Nearest RAL 8004




**272 Ochre**  
 Nearest NCS S 4050-Y50R  
 Nearest RAL 8023



**762 Tile brown**  
 Nearest NCS S 5040-Y60R  
 Nearest RAL 8004



**434 Brown**  
 Nearest NCS S 8005-Y80R  
 Nearest RAL 8017



**387 Coffee brown**  
 Nearest NCS S 8502-Y  
 Nearest RAL 6022



**975 Copper green**

Nearest NCS S 3020-G10Y  
Nearest RAL 6021



**874 Forrest green**

Nearest NCS S 6020-G30Y  
Nearest RAL 6003



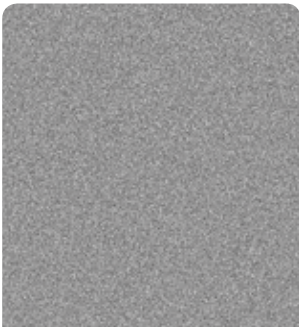
**28 Moss green**

Nearest NCS S 7020-B90G  
Nearest RAL 6005



**830 Pine green**

Nearest NCS S 7010-G30Y  
Nearest RAL 6020



**045 Silver metallic**

Nearest NCS -  
Nearest RAL 9006



**044 Anthracite metallic**

Nearest NCS S 6000-N  
Nearest RAL 9007



**778 Copper metallic**

Nearest NCS S 4030-Y60R  
Nearest RAL 8003

Due to printing limitations is the colours shown in this brochure not exact. Please ask for steel sheet samples for correct colours.

# Assortment chart - special

Number	Name	Nearest NCS	Nearest RAL	Coverline		Seamline	Building System	Doorline
				HBP	MPE		Corresp. no	PE
005	Winter white	S 1002-Y50R	9002	0,5/0,6				
035	Grey	S 8000-N	8019			P		0,4
554	Dolphin grey	S 4502-B	7045	0,5/0,6				
561	Bright blue	S 4050-R90B	5019	0,5				0,4
21	White aluminium	S 2002-B	9006				21	
29	Grey Alu	S 5502-Y	9007				29	
31	Grey white	S1502-Y	9002				31	

## Special colours

Colours normally unique for one unit or one country.

Colours purchased upon request.

Lead time = delivery time from steel mills.

If stocked at Lindab Steel. 15% stocking interest when stocked more than 50 days.

			
<b>005 Winter white</b>	<b>31 Grey white</b>	<b>29 Grey alu</b>	<b>21 White aluminium</b>
Nearest NCS S 1002-Y50R Nearest RAL 9002	Nearest NCS S 1502-Y Nearest RAL 9002	Nearest NCS S 5502-Y Nearest RAL 9007	Nearest NCS S 2002-B Nearest RAL 9006
			
<b>554 Dolphin grey</b>	<b>035 Grey</b>	<b>561 Bright blue</b>	
Nearest NCS S 4502-B Nearest RAL 7045	Nearest NCS S 8000-N Nearest RAL 8019	Nearest NCS S 4050-R90B Nearest RAL 5019	

# Information about NCS and RAL

## NCS Edition 2 (S)

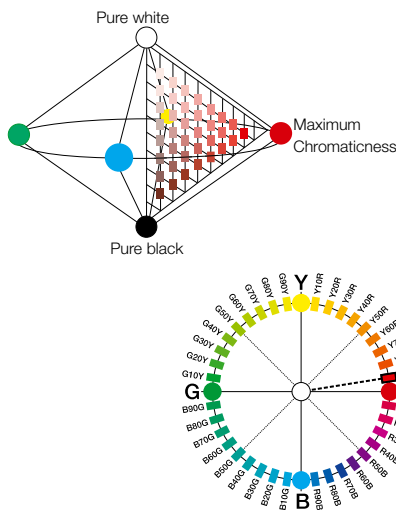
NCS Edition 2 is always presented with an S in front of the notation. The S means second edition. NCS (Natural Colour System) is a system with the help of which all conceivable surface colour can be described. The system is illustrated by a colour atlas containing 1950 colour samples. NCS is a Swedish, Norwegian, Spanish and South African standard and is one of the most widely used colour-describing systems in the world.

The variables in the NCS notation are built entirely on visually observable properties of the colours. NCS can also be illustrated graphically in a geometrical model as shown below.

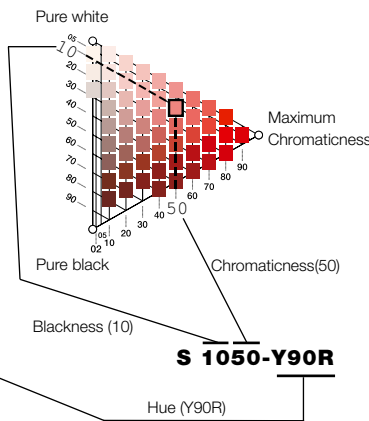
## NCS Edition 1

All colour samples based on NCS edition 2 have an S in front of the NCS notation (S stands for Second edition). The older Edition 1 did not include the S. Otherwise the notation system have exactly the same function in NCS Edition 1 as in NCS Edition 2. The colour samples are not exactly the same between NCS Edition 1 and 2. In Edition 1 there was 1535 different standard colours.

**NCS Colour solid**



**The colour solid seen from the side**



**The colour solid seen from above**



In the notation for a red colour S 1050-Y90R the first two digits indicate the percentage of visual blackness in the colour. The next two digits indicate the colour's visual chromaticness. They can together be maximum 100%. In the example 1050 is the rest 40% pure white. The letter-number combination after the hyphen indicates the colour's hue, i.e. which chromatic attributes are included and the proportion between these. In this case, it is a yellow hue with 90% redness. The blackness and chromaticness are given in an equilateral triangle and the hue on a circle. A point in the triangle and a line on the circumference of the circle provide an unequivocal description of a colour. The red colour S 1050-Y90R is marked in the triangle and in the circle above.

## NCS exact value

Any surface can be measured and the exact NCS colour notation can be calculated for the surface. This value can then look like this: 1342-B27G. There are no standard sample available for this notation but normally a producer also gives the closest NCS standard notation (in edition 1 or 2).



## RAL

The RAL colours are a semiofficial German collection of 210 different colour samples (K7), which are used primarily as colour standards in the German industry. The RAL colours are available in a colour register with matt gloss or glossy colour samples and in small overview colour cards. The RAL colours are a number of non-systematically chosen colour samples which are divided into nine colour groups: yellow, orange, red, violet, blue, green, grey, brown and white/aluminium/black. In the four-digit RAL notation, the first digit indicates to which of the nine colour groups the colour belongs. The remaining digits are merely a serial number, which indicates nothing but about the appearance of the colour.

## Lindab recommends

### **When matching colours with other painted surfaces**

One should define the colour based upon these alternatives:

1. Piece of sheet metal from actual delivery.
2. Sample of sheet metal from Lindab.
3. Nearest NCS. This can however result in some degree of deviation compared with the actual delivery.

Make a test by painting a small surface to see if the colour matching is acceptable.

### **The influence of gloss**

Differences in gloss between two different painted surfaces affects the perception of the likeness of the surfaces. Gloss values for our colours is found at the bottom of the page with the overview chart.





Lindab is an international corporation that develops, manufactures and markets solutions in metal plate for the building industry.

Lindab's two business areas - Ventilation and Profile - offer everything from complete indoor climate solutions and building systems to individual ventilation and building components for all types of housing, commercial and industrial buildings.

The Lindab Group is represented in 30 countries throughout Europe. Our head office is in Grevie, in the south of Sweden.

