



**REHAU EVERLOC**<sup>™</sup>  
HEATING AND PLUMBING SYSTEMS

Making joints couldn't be simpler, saving you valuable time and money. Using the unique REHAU EVERLOC™ cold jointing compression sleeve system, permanent and secure joints can be made in seconds.

The REHAU Pipe-in-Pipe option offers even greater flexibility by offering 'in-floor' pipe installations. The combined pipe and sleeve can be fitted prior to laying the floor screed, removing the need to construct special ducts, thereby saving a considerable amount of time. The main features and benefits include:

### Piece of mind

- Scale resistant
- Quality engineering
- Leak proof
- Warranty

### Design

- Unlimited options
- Technical service
- Flame free installation
- No ducts required

### Cost

- Speed of fitting
- Labour
- PE-Xa Pipe
- Speed of installation

### Noise reduction

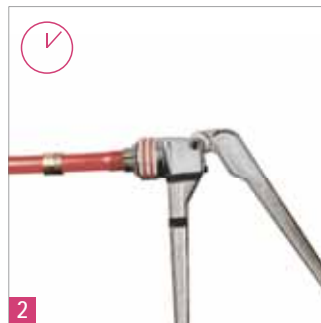
- Pipe-in-pipe
- Smooth bore
- No bore reduction at joint

# REHAU EVERLOC™

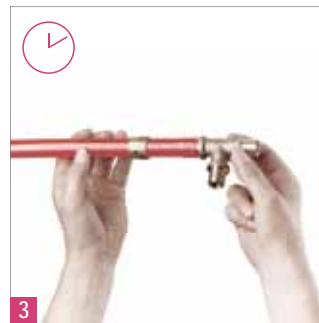
CUT TIME, CUT COSTS WITH REHAU EVERLOC™



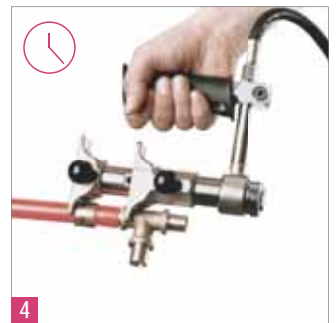
**2 seconds**  
Cut the pipe to the desired length with the REHAU pipe cutter and slide a compression sleeve onto the pipe.



**7 seconds**  
Expand the end of the pipe with REHAU expander pliers.



**10 seconds**  
Place the pipe onto the end of the fitting.



**Only 23 seconds**  
Line the fitting up in final position, complete the joint and bring the compression sleeve into place with the REHAU clamping tool.  
*That's it – only 23 seconds.*

# REHAU EVERLOC™

## THE SIMPLE ROUTE TO QUICKER INSTALLATIONS



*Easy to handle, so easily routed*



*Easy access to radiators*



*No need for special ducts*



*DZR Accessory Range*

### Pipe-in-Pipe

Light and easy to handle, the pipe and its corrugated sleeve are just unrolled into position across the floor and cut to length. With the pipe easily routed around obstacles, the fittings can then be loosely assembled in position before permanent and secure joints are made.

The REHAU Pipe-in-Pipe sleeve system meets water regulations requirements regarding pipe accessibility for pipework set in floors or walls. Continuous lengths of pipe can be simply and easily withdrawn from the sleeve and replaced as necessary. Floor boxes for enabling access to radiator tails are available.

The system offers significant installation and material cost savings, as the combined pipe and sleeve can be fitted prior to laying the floor screed, removing the need to construct special ducts.

Being flexible and laid in easy curves, measurement is not so critical as length can be gained or lost through manipulation, so saving time and materials.

### EVERLOC™ Fittings

An extensive range of fittings is available to cover all applications. These include copper adapters, male/female threaded fittings, tees and elbows.

Distribution manifolds, stainless steel radiator tails and accessories make up the package.

The superbly engineered DZR brass compression sleeve fittings are designed specially for the purpose, enabling joints to be assembled in seconds, with all fittings utilising the same method of cold jointing.

# REHAU EVERLOC™

## TYPICAL LAYOUTS OF A LOW MAINTENANCE SYSTEM

The tough and flexible properties of RAU PE-Xa, and the fact that it is continuously extruded and can be supplied in long coils, makes it the ideal choice for heating and plumbing applications.

### Scale Resistant

Ultra smooth inner lining minimises limescale build up, for long life and consistent flow rates.

### Durable

Flexible pipework has a service life in excess of 50 years, due to its excellent heat age resistance, high tensile strength and resistance to deformation and impact damage.

### Pressure Safe

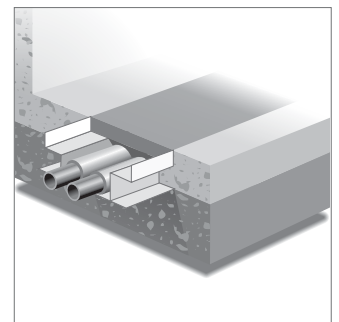
The pipework has an in-service pressure rating of 6 bar at 95°C (BS7291:1990).

### Corrosion Free

The pipe is inert, completely corrosion free and the EVAL polymer oxygen diffusion barrier prevents oxygen getting into the system to corrode ferrous components.

### Typical Layouts

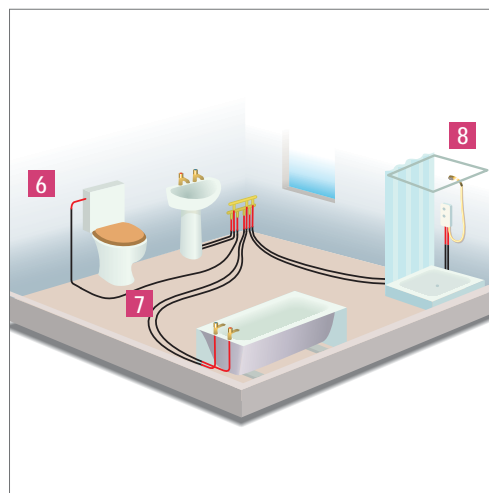
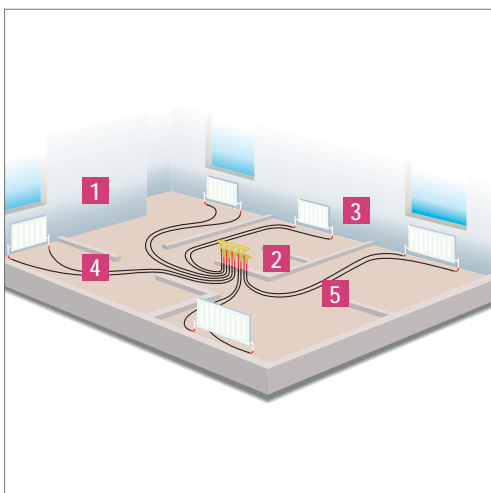
- 1 Stainless steel or copper radiator tails with access to joints
- 2 Manifolds of brass construction with flow and return sections.
- 3 Continuous lengths of Pipe-in-Pipe – no joints.
- 4 Pipes should be laid as shown and not direct between radiator to appliance.
- 5 Pipe-in-Pipe sleeve holding flow and return pipes.
- 6 Pipes can be completely concealed in floors or walls.
- 7 Floor screed placed after pipe installation.
- 8 Wall plate elbows allow firm fixing of appliances



### The alternative -

#### floor mounted ductwork:

- Ducting must be level with finished floor height
- Pipe installation is difficult - with lots of fittings required
- Ductwork covers must be accessible and removable



*Manifold options illustrated. Two pipe ring systems also possible.*

# REHAU EVERLOC™

## HEATING AND PLUMBING SYSTEM

### FLEXIBLE WHATEVER THE APPLICATION



Manifolds for Centralised Distribution



First fix bath tap and W.C. fittings



Concealed Mira shower mixer and head



Bracketing

#### Manifolds for Centralised Distribution

A REHAU manifold keeps the heart of the installation in one place, allowing services to be run from a central point out to radiators or sanitary fixtures, and allowing for simple fault finding and maintenance.

The ability to run all pipework out from a single point keeps installation simple and saves installation time.

#### Bracketing

REHAU offers a full range of purpose made brackets enabling firm and secure fixing of fittings, for all common heating and plumbing applications, for example, showers and washbasins.

The brackets provide convenient junctions for fixture connections and can be concealed or left

visible, according to preference and/or task. Support channeling and stainless steel radiator tails are available for specific tasks.

#### Traditional versus Modern

Traditional methods and materials, proven over many years, will continue to play a part in today's heating and plumbing industry. However, forward thinking companies and modern professional engineers looking to save time, money and effort need look no further than REHAU's flexible pipework system.

No-one comes close to REHAU flexible pipework for proven quality, reliability and performance so if you are considering making the switch from traditional to modern, choose REHAU for absolutely reliable fittings and total service.



### **21st Century Solution For 18th Century Castle, Inveraray Castle, Loch Fyne, Scotland**

Inveraray Castle has been fitted with central heating for the first time in its history using REHAU's PE-Xa flexible pipework. The RAUTHERM pipe has been used throughout the castle over three floors. Consultants Irons Foulner chose the system as it offered minimum disruption during installation and has a proven track record.

The system was installed by specialist contractor Taylor and Fraser.

### **Luxury Sawmill Development, Hull**

More than 8,500m of REHAU's PE-Xa pipework has halved the installation time for all the heating and plumbing requirements in 51 properties in the luxurious new Sawmill development.

Using the REHAU system, there is no requirement to notch joists, and the continuous runs of pipework can simply be laid under the floor with no need to make joints.

### **Prestigious Refurbishment Project, Blackburn, Lancashire**

REHAU's flexible heating and plumbing system has been chosen for a project in Lancashire where leak free pipework was the key priority.

The flexible pipework was fast and easy to install even in awkward locations and, because of REHAU's patented EVERLOC™ non-detachable DZR brass joint which is simple to make and fit, were guaranteed no leaks.



*Luxury Sawmill Development*



*Prestigious Refurbishment Project*

### Pipe specification

High density cross-linked polyethylene with EVAL oxygen barrier

Pressure rating of 6 Bar at 95°C

BS7291: 1990 Part 1 and Part 3

Oxygen diffusion layer to DIN 4726

Excellent chemical resistance\*

Accommodates exposure to system failure temperatures of 114°C

WRc listed under the Water Fittings and Byelaws scheme

Suitable for installation from -5°C upwards

### Fittings specification

Dezincification resistant brass

### RAUTHERM Universal pipe size

O.D. x wall thickness

16mm x 1.5mm

20mm x 1.9mm

25mm x 2.3mm

32mm x 2.9mm

### Heating RAUTHERM FW / Plumbing RAUHIS

40mm x 3.7mm

50mm x 4.6mm

63mm x 5.8mm

\* Please contact REHAU Technical Department for more details.

### All applications covered

One pipe serves all service applications from 16 to 32mm, with a 40 to 63mm option available for mains, risers and other applications. Due to natural bends (sizes 16-32mm), smooth interior of pipe and resistance to scale build up, flow performance of pipes is generally greater than pipes of a comparable size in copper.

Our verbal and written application engineering advice is based upon experience and the best of our knowledge. However it is to be regarded as non-binding information. Working conditions and use under conditions for which the product was not intended and over which we have no influence exclude any claim resulting from our information.

We recommend that a suitable check is made as to whether the REHAU product is suitable for the envisaged purpose. Application, use and processing of the products is carried out beyond the scope of our control and are therefore carried out exclusively at your own responsibility. If liability should still apply, then this is restricted, in the case of all damage, the value of the goods supplied by us and used by you.

Our warranty applies to the consistent quality of our products as per our specification and in accordance with our general terms and conditions of delivery and payment. This document is protected by copyright. All rights based on this are reserved. No part of this publication may be translated, reproduced or transmitted in any form or by any similar means, electronic or mechanical, photocopying, recording or otherwise, or stored in a data retrieval system.

## UK & IRELAND SALES OFFICES

### London

REHAU Ltd  
The Building Centre  
26 Store Street  
London  
WC1E 7BT

Tel: (0207) 580 6155  
Fax: (0207) 307 8595

### Slough

Units 5 J & K  
Langley Business Centre  
Station Road  
Langley  
Slough SL3 8DS

Tel: (01753) 588500  
Fax: (01753) 588501

### Manchester

Brinell Drive  
Irlam  
Manchester  
M44 5BL

Tel: (0161) 777 7400  
Fax: (0161) 777 7401

### Glasgow

Phoenix House  
Phoenix Crescent  
Strathclyde Business Park  
Bellshill, North Lanarkshire  
ML4 3NJ

Tel: (01698) 503700  
Fax: (01698) 503701

### Dublin

9 St. Johns Court  
Business Park  
Swords Road  
Santry  
Dublin 9

Tel: 00353 (0)1 8165020  
Fax: 00353 (0)1 8165021