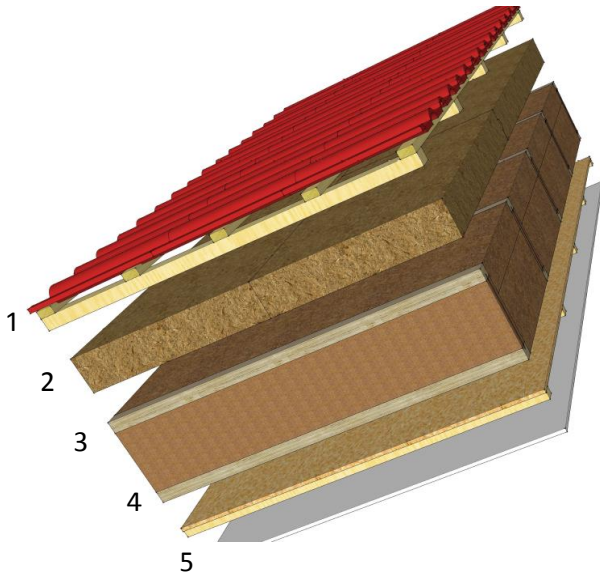


## System Benefits

- ~ Low thermal conductivity
- ~ Summer heat protection
- ~ Vapour open construction
- ~ Air tight construction
- ~ Renewable building products



### EXT

1. Tiles / Tile Batten / Batten
2. Steico Universal or Special
3. Pre insulated Steico Joists / Steico Flex
4. OSB / Service Batten
5. Plasterboard

### INT

Rafter Depth	22mm Universal		35mm Universal		52mm Universal	
	U-Value W/m <sup>2</sup> k	Phase Shift Hours	U-Value W/m <sup>2</sup> k	Phase Shift Hours	U-Value W/m <sup>2</sup> k	Phase Shift Hours
220mm SJ	0.16	12.2	0.15	13.3	0.15	14.8
240mm SJ	0.15	13.0	0.14	14.2	0.14	15.7
300mm SJ	0.12	15.3	0.12	16.3	0.11	18.0
360mm SJ	0.10	17.5	0.10	18.7	0.10	20.2

Rafter Depth	60mm Special		80mm Special		100mm Special		120mm Special	
	U-Value W/m <sup>2</sup> k	Phase Shift Hours	U-Value W/m <sup>2</sup> k	Phase Shift Hours	U-Value W/m <sup>2</sup> k	Phase Shift Hours	U-Value W/m <sup>2</sup> k	Phase Shift Hours
220mm SJ	0.14	15.3	0.13	17.0	0.13	18.7	0.12	20.2
240mm SJ	0.13	16.2	0.13	17.7	0.12	19.3	0.11	20.8
300mm SJ	0.11	18.3	0.11	20.0	0.10	21.5	0.10	23.8
360mm SJ	0.10	20.7	0.09	22.2	0.09	23.7	0.09	24.7