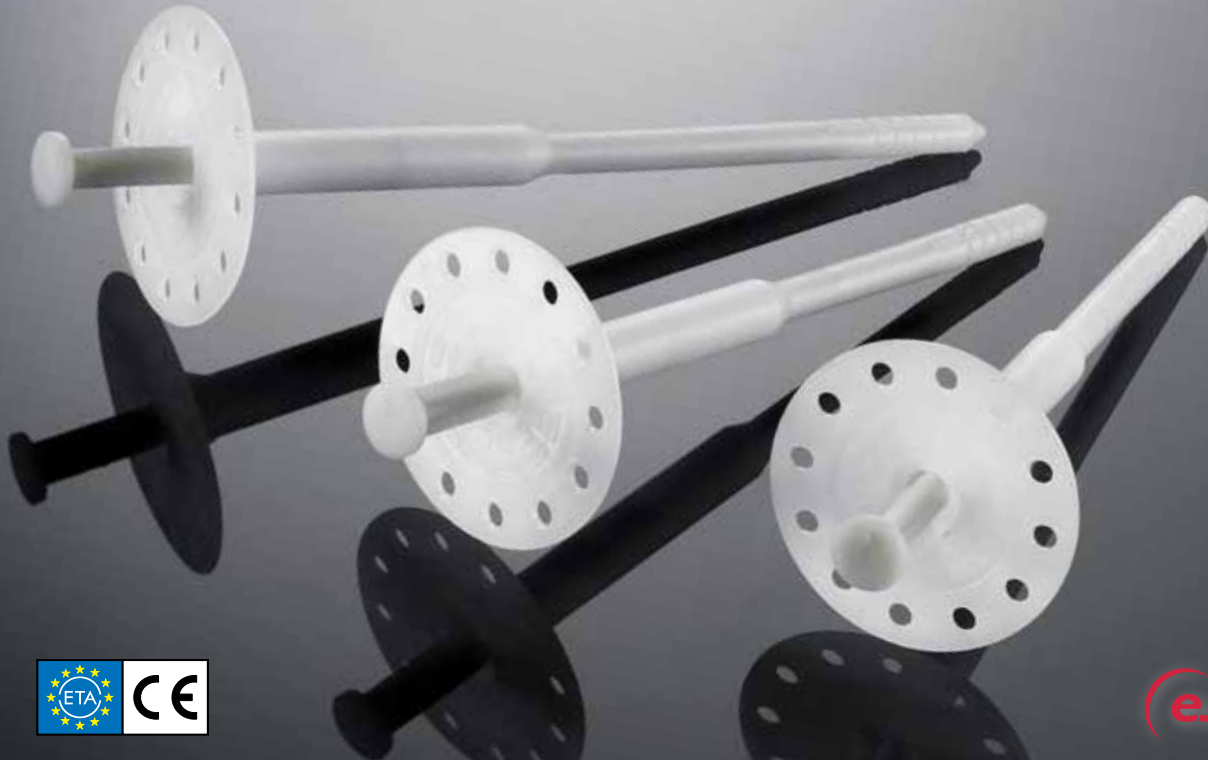




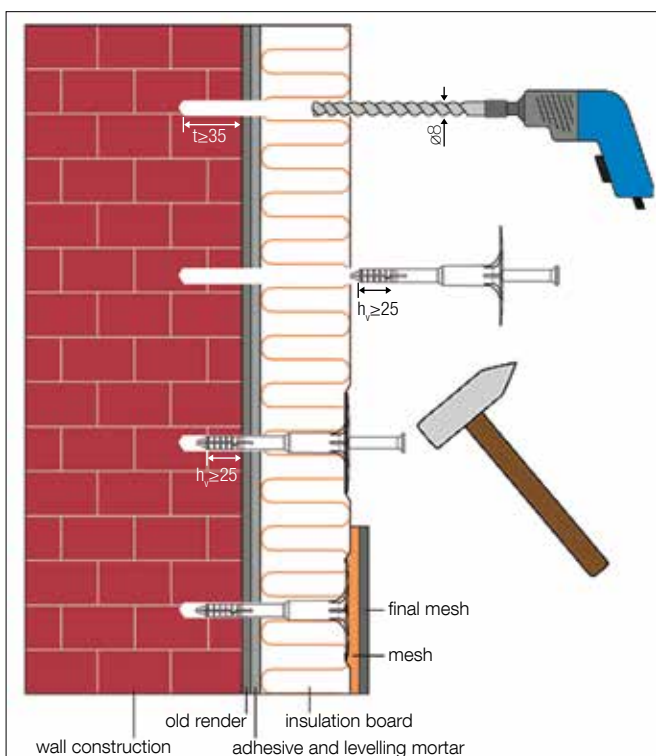
## EJOT® H1 eco

The universal hammer-in anchor for all substrates with European Technical Approval

Fastening of insulation boards



### Installation



### Advantages

- ❑ Approved for all building materials
- ❑ Solid steel nail (break-proof)
- ❑ Low profile washer face
- ❑ Plastic injection element to reduce thermal bridges
- ❑ Can be used with an additional spreader washer
- ❑ Short embedment depths, minimum drill hole depth
- ❑ High loads for your security
- ❑ Economic anchor usage
- ❑ Premounted nail for quick installation
- ❑ With EPD (Environmental Product Declaration)

## EJOT® H1 eco

The universal hammer-in anchor for all substrates with European Technical Approval

### Fastening of insulation boards

#### Technical data

Anchor nominal diameter	8 mm
Washer diameter	60 mm
Drill hole depth $h_1 \geq$	35 mm (55 mm)
Embedment depth $h_{ef} \geq$	25 mm (45 mm)
Point thermal transmission $\chi$	0.001 W/K
Use categories acc. to ETA*	A, B, C, D, E
European Technical Assessment	ETA-11/0192

Values in parentheses: anchoring in lightweight aggregate concrete and autoclaved aerated concrete (use categories D and E)

#### Accessories

A broad range of accessories is available for the EJOT H1 eco product group:

EJOT combi washer **VT 90** and **SBL 140 plus**



#### Characteristic loads

A	Normal weight concrete C 12/15 acc. to EN 206-1	0.9 kN
A	Normal weight concrete C 20/25 - C 50/60 acc. to EN 206-1	0.9 kN
B	Clay bricks (Mz) acc. to EN-771-1 / DIN 105	0.9 kN
B	Solid lime sandstone (KS) acc. to EN 771-2 / DIN EN 106	0.9 kN
C	Vertically perforated clay bricks (Hlz) acc. to EN 771-1 / DIN 105, bulk density, $\geq 1.2 \text{ kg/dm}^3$	0.75 kN
C	Vertically perforated clay bricks (Hlz) acc. to EN 771-1 / DIN 105, bulk density, $\geq 0.9 \text{ kg/dm}^3$	0.6 kN
C	Sand-lime perforated bricks (KSL) acc. to EN 771-2 / DIN 106	0.9 kN
D	Lightweight aggregate concrete (LAC 4 - LAC 25) acc. to EN 1520	0.9 kN
E	Autoclaved aerated concrete AAC 4 - AAC 7) acc. to EN 771-4	0.5 kN

Please note: For calculation of design loads the national safety factors have to be included (e.g. Germany: 3). Please observe the approval.

#### Product range

Use categories A-C Insulation (mm)		Use categories D-E Insulation (mm)		Product name and length (mm)	Product code	Packaging (pieces)	Pallet quantity (pieces)
New build. <sup>1)</sup>	Renovation <sup>2)</sup>	New build. <sup>1)</sup>	Renovation <sup>2)</sup>				
60	40	40	-	EJOT H1 eco 095	8746 095 400	100	5,000
80	60	60	40	EJOT H1 eco 115	8746 115 400	100	4,000
100	80	80	60	EJOT H1 eco 135	8746 135 400	100	4,000
120	100	100	80	EJOT H1 eco 155	8746 155 400	100	3,000
140	120	120	100	EJOT H1 eco 175	8746 175 400	100	3,000
160	140	140	120	EJOT H1 eco 195	8746 195 400	100	3,000
180	160	160	140	EJOT H1 eco 215	8746 215 400	100	3,000
200	180	180	160	EJOT H1 eco 235	8746 235 400	100	2,000
220	200	200	180	EJOT H1 eco 255	8746 255 400	100	2,000
240	220	220	200	EJOT H1 eco 275	8746 275 400	100	2,000
260	240	240	220	EJOT H1 eco 295	8746 295 400	100	2,000

<sup>1)</sup> 10 mm adhesive

<sup>2)</sup> 10 mm adhesive and 20 mm old render